

A close-up photograph of various timber mouldings and wood samples. The image shows several pieces of light-colored wood with different profiles, including a dark-stained piece with a rounded top edge. The wood is arranged in a layered, overlapping fashion, creating a sense of depth and texture. The background is a plain, light-colored surface.

**porta**

**Timber  
Mouldings  
Range**

1300 500 250 | [porta.com.au](http://porta.com.au)

# Discover Your Products

## Unlock Product Codes



DAR6512 ■■

You can locate the product code within this brochure.

The letters correspond to the profile name code. For example, this product is Dressed All Round (DAR).

The number represents the profile size. The first two or three numbers always correspond to the profile Width (e.g. 65mm). The last two numbers always correspond to the profile thickness (e.g. 12mm).

DAR6512 ■■

Coloured squares show the available timber species. For example, this product is available in Tasmanian Oak and Clear Pine.

## Timber Colour Key

- Tasmanian Oak
- Mixed Hardwood
- Primed FJ Pine
- Eucalyptus Grandis
- Clear Pine
- H3 Primed FJ Pine
- Meranti
- General Purpose Pine
- Premium Pine

## Locate Products In-store

Product Category —

Timber Species —

Product Type —

Product Size —

Dimensions & Image —

**Dressed All Round (DAR)**

**TASMANIAN OAK**

**Square Dressed**

**65x12mm**

65mm

12mm

**2.4m**

DAR6512

**porta**

Timber Colour —

Certification —

Length —

## Porta Colonial Architrave

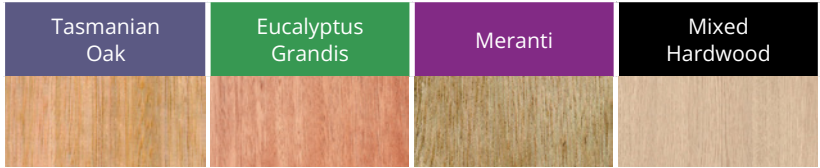
in Primed FJ Pine 66x18mm







# Contents

Porta Timber Species	4 – 5
General Purpose Mouldings	6 – 7
Ceiling and Wall Mouldings	8 – 9
Dressed Boards	10 – 12
Dowels	13
Architraves and Skirtings	14 – 16
Windows and Doors	17 – 19
Handrails	20
Handrail System	21
Outdoor Timber Mouldings	22 – 23

# Porta Timber Species



	Tasmanian Oak	Eucalyptus Grandis	Meranti	Mixed Hardwood
Key features	<p>A blend of Eucalyptus species, Tasmanian Oak ranges from straw to reddish brown, with hints of cream and pink. It boasts a uniform, smooth texture and a straight, even grain.</p>	<p>Showcasing soft pinks and peach tones, it reveals unique character with insect trails and pinholes. The grain is predominantly straight and uniform.</p>	<p>A light red hardwood suitable for painting or staining. Variations in colour may occur due to multiple species sold as Meranti.</p>	<p>Porta Mixed Hardwood is a versatile and durable timber offering consistent strength, stability, and excellent workability. Its fine, even grain and smooth texture make it ideal for a wide range of interior applications and finishes.</p>
Classification	Hardwood	Hardwood	Hardwood	Hardwood
Applications	Indoor Suitable for wet areas*	Indoor Suitable for wet areas*	Indoor Suitable for wet areas*	Indoor Suitable for wet areas*
Certification	 <p>PEFC www.pefc.org</p>	 <p>FSC www.fsc.org</p>	 <p>PEFC www.pefc.org</p>	 <p>FSC www.fsc.org</p>

\*Installation in wet areas must comply with specified requirements according to AS 3740:2021, and NCC Vol 1 F1.7 or Vol 2 3.8.1.



Light straw coloured softwood, knotfree and more manageable than knotty pine. It takes well to staining, painting, waxing, or colour washing.

This Pine is graded as Standard and Better, allowing for knots and resin pockets. It can be painted, stained, colour washed, waxed, or left in its raw state.

Porta Primed Finger Jointed Pine offers a cost effective, ready to paint real timber substrate, made from Clear Pine with enhanced strength and stability.

This Finger Jointed Clear Pine product is fortified with H3 LOSP treatment for termite and fungal resistance and comes pre-coated with a green, water based primer.

Porta Premium Pine is a high-grade pine that is generally free from knots and resin pockets. It offers excellent versatility, suitable for painting, staining, colour washing, waxing, or leaving in its natural state.

Softwood

Softwood

Softwood

Softwood

Softwood

Indoor Suitable for wet areas\*

Indoor Suitable for wet areas\*

Indoor Suitable for wet areas\*

Outdoor Above ground

Indoor Suitable for wet areas\*



Porta is committed to sourcing timber from sustainable, responsibly managed forests. Ask for our certified range.

# General Purpose Mouldings

## Ovolo

---



OVL12 ■



OVL19 ■



OVL30 ■■

## Tri Quad

---



TQD8 ■



TQD12 ■■



TQD18 ■



TQD19 ■■■

## Quad

---



QD6 ■



QD9 ■



QD12 ■■■



QD15 ■



QD18 ■■  
QD19 ■■■



QD23 ■■



QD25 ■■



QD30 ■

Highly adaptable, our versatile general purpose timber mouldings are well-suited for various projects. Our collection includes edging, external corners, quads, and decorative architectural shapes in various sizes.

## Scotia



SCO18 ■



SCO19 ■



SCO30 ■■■■

## Edging



REC20 ■■



REC30 ■■■■



LIP2207 ■

Round External Corner

Shelf Lipping Edging

## Coverstrap



BNE2008 ■



RDE2005 ■



RDE3005 ■



RDE3008 ■■



RDE3012 ■



RDE3108 ■



RDE4005 ■■



RDE4008 ■■



RDE4012 ■



RDE4108 ■

Rounded Edging

# Ceiling and Wall Mouldings

## Insert Moulding

---



INS1207 ■



INS1511 ■ ■



INS1811 ■



INS2308 ■



INS2318 ■



INS3111 ■

## Panel Moulding

---



PM1206 ■



PM2009 ■



PM3012 ■



PM3115 ■



PM3318 ■



PM4018 ■

Our decorative ceiling and wall trims can elevate a room’s design, adding texture and character. Our diverse range spans classic to retro, colonial to modern styles, enabling you to effortlessly craft your ideal room.

## Chair Rails, Picture Rails and Dado Rails



GCR6525 ■

Chair Rail



PR6524 ■



PRT4018 ■

Picture Rail



GD6426 ■



SHD4015 ■

Dado Rail



SHD3015 ■ ■



VD3031 ■

## Picture Framing



PFP1919 ■



PFP2819 ■



PFP3019 ■



PFP3119 ■



PFP3521 ■



PFP4530 ■

# Dressed Boards

## Dressed All Round (DAR)



SQE2004 ■



SQE2008 ■ ■



SQE2508 ■



SQE3008 ■ ■



SQE3504 ■



SQE3508 ■



SQE4008 ■ ■



SQE6508 ■



SQE9008 ■



DAR0606 ■



DAR0909 ■



DAR1212 ■



DAR1818 ■ ■ ■ ■ ■



DAR2121 ■ ■ ■ ■



DAR3030 ■ ■  
DAR3131 ■



DAR4242 ■ ■



DAR7070 ■



DAR9090 ■



# Dressed Boards

## Dressed All Round (DAR)



DAR11018 ■ ■  
 DAR11019 ■



DAR11419 ■  
 DAR11518 ■  
 DAR11619 ■



DAR13818 ■ ■ ■  
 DAR14019 ■ ■



DAR14012 ■



DAR14030 ■



DAR14040 ■



DAR18419 ■  
 DAR18518 ■



DAR18530 ■



DAR23519 ■



DAR28519 ■

# Dowels

Porta's dowels offer versatility for functional and decorative use. Ideal for handrails, coat holders, pegboards, and more. With various sizes available, they're perfect for any project or application.

## Dowels



DOW04 ■



DOW06 ■ ■



DOW08 ■ ■



DOW09 ■ ■  
(actual size = 9.5mm)



DOW12 ■ ■  
(actual size = 12.7mm)



DOW16 ■ ■



DOW19 ■ ■



DOW22 ■



DOW25 ■ ■  
(actual size = 25.4mm)



DOW30 ■ ■  
(actual size = 28.6mm)



DOW35 ■ ■



DOW43 ■ ■  
(actual size = 42.4mm)

### Round Dowel



HR1206 ■



HR1507 ■



HR3012 ■

### Half Round Dowel

# Architraves and Skirtings

## Architraves and Skirtings



BVA4211



BVA6611



BVA6618



BVA9211



BVA9218

Bevelled



BNA4118



BNA4218

BNA4211



BNA6611



BNA6618



BNA6819



BNA9218

Bullnose



COA4211



COA6611

Colonial (Tabma:AS10)

Porta's architraves and skirtings range aids in establishing a cohesive framework for your home decor theme. Skirting boards shield your walls from daily wear and tear, while architraves serve a functional role by concealing the gaps between wall lining, door jambs, or window frames.

## Architraves and Skirtings



COA4118 ■



COA4218 ■



COA6618 ■■



COA6819 ■



COA9118 ■

Colonial (Tabma:AS2)



COA9218 ■



COA13818 ■

Colonial (Tabma:AS2)



HSA6618 ■■



HSA9218 ■

Half Splayed

# Architraves and Skirtings

## Architraves and Skirtings

---



PRA4112 ■



PRA4118 ■



PRA4211 ■



PRA4218 ■



PRA6611 ■

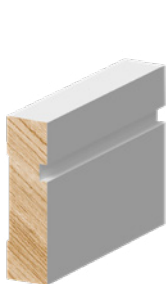


PRA6612 ■



PRA6618 ■

### Pencil Round



SLA6618 ■



SLA9218 ■



LTA6618 ■



LTA9218 ■

### Shadow Line

### Lambs Tongue

# Windows and Doors

## Window and Door Profiles



PTB2009 ■

Parting Bead



FB1806 ■

Fly Bead



STB2015 ■

Staff Bead



STB3015 ■



DS4212 ■

Door Stop



BGB1209 ■



BGB1510 ■



SGB0808 ■



RGB1109 ■

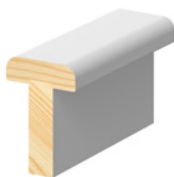


BGB1912 ■ ■



BGB3012 ■

Glass Bead (Bevel/Sash/Rounded)



RTA4530 ■



RTA5030 ■ ■

Rounded  
T Astragal



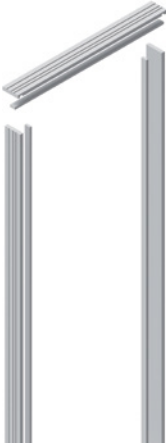
WM3019 ■

Window  
Mould

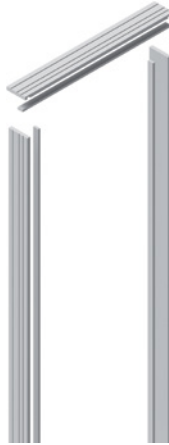
# Windows and Doors

## Door Jamb

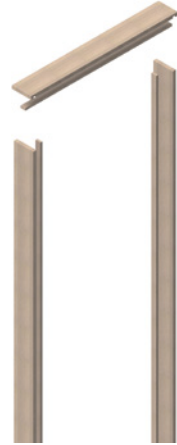
---



SDJ9218 ■

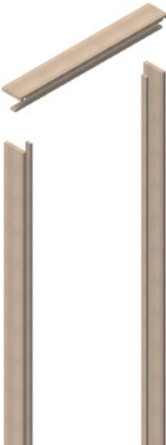


SDJ11218 ■

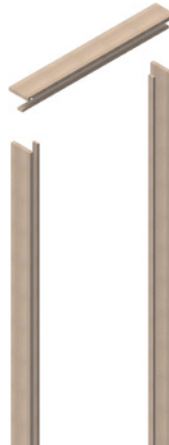


SDJ11219 ■

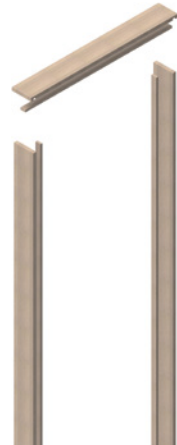
Single Door Jamb Set (Loose Stop)



SDJ12219 ■



SDJT11219 ■



DDJ11219 ■

Single Door Jamb Set (Loose Stop)

Porta's window and door moulding range is your go to for professional results, no matter the project's size. Whether you're adding finishing touches to a window trim or installing a new door jamb, you'll discover a profile or style to suit your project requirements.

## Door Jambs

---



DJSR923038 ■



DJSR1103038 ■



DJSH1163038 ■

Single Door Jamb Set (Rebated)

# Handrails

Stylish, functional timber handrails in a range of profiles designed to suit classic homes, modern builds, staircases, access points, and renovations.

## Handrails



HRS4433 ■  
Round



HRS7031 ■  
Oval

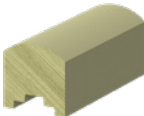


HRS7029 ■  
Rectangle



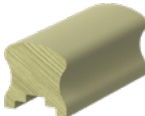
DOW43 ■ ■  
Dowel

## Handrails (Outdoor)



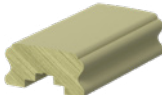
HBR6666 ■

Bread Loaf Profile

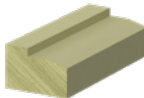


HLW6666 ■

Ladies Waist Profile

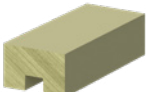


HLW8542 ■



HBT6642 ■

Bottom Rail



HMD6642 ■

Mid Rail

# Handrail System

The Porta handrail system provides the perfect balance of safety and style. The versatile system features a contemporary solid round timber dowel handrail and stylish high grade stainless steel fittings.

**Handrail System** This system is designed to be used with the Porta 43mm timber dowel.



70° Adjustable Bend

HDRADJ10030BLK

HDRADJ10031643



90° Bend

HDRBEND65304BLK

HDRBEND6531643



Wall Bracket

HDRBRAC70304BLK

HDRBRAC7031643



End Cap

HDRCAP3031643

HDRCAP30304BLK



Joiner

HDRJOIN50304BLK

HDRJOIN5031643



Alignment Jig

HDRJIG31643

# Outdoor Timber Mouldings

## Dressed All Round (DAR)

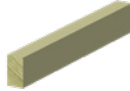
---



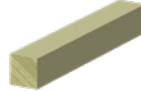
DAR1818



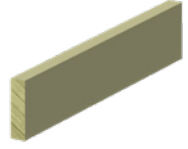
DAR3011



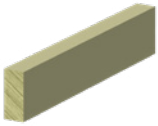
DAR3118



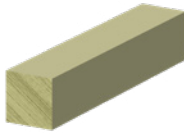
DAR3131



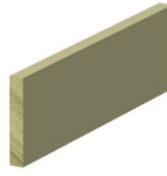
DAR4211



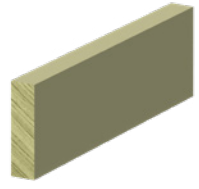
DAR4218



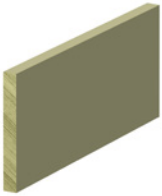
DAR4242



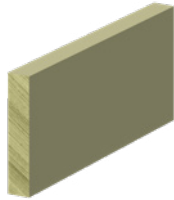
DAR6611



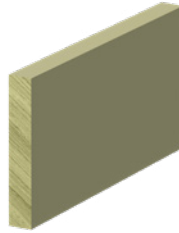
DAR6618



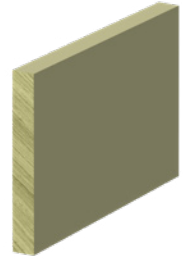
DAR9211



DAR9218



DAR11018



DAR13818

## Fascia

---



FAB19018



FAB19030



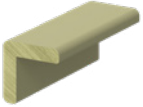
FAS19018



FAS19030

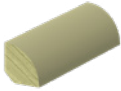
Porta's external pine products undergo H3 LOSP (Light Organic Solvent Preservative) treatment, enhancing their resilience against termite and fungal risks. This treatment guarantees long-lasting durability and suitability for above-ground use, even when facing exposure to harsh environmental conditions.

## General Purpose Mouldings



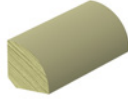
REC30

Round External  
Corner

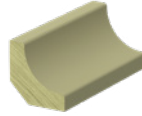


QD18

Quad

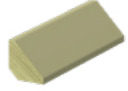


QD23



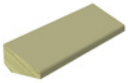
SCO30

Scotia



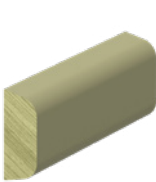
TQD18

Tri Quad



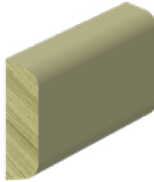
BGB1912

Glass Bead



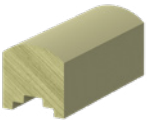
RDE3012

Coverstrap



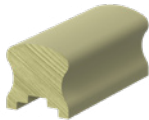
RDE4012

## Handrails



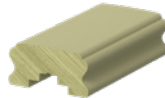
HBR6666

Bread Loaf Profile

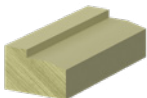


HLW6666

Ladies Waist Profile

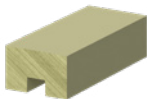


HLW8542



HBT6642

Bottom Rail



HMD6642

Mid Rail

Porta is more than a timber and panel supplier. We're a trusted partner, delivering purpose-driven products, reliable service, and local expertise.

Proudly Australian, we're passionate about progress and committed to lasting quality.

Our curated range is built on decades of know-how and designed to give you exactly what you need. With a legacy of trust and a focus on the future, we help you build smarter, better, and with confidence.

# porta



© 2025 Porta Products Pty Ltd. All rights reserved.

Timber is a natural material, and variations in colour, grain, and features will occur within the same species. Images shown are indicative only and may differ from actual products. While every effort is made to ensure accuracy, product details and availability may change as part of ongoing development. Please confirm specifications, availability and pricing at the time of purchase.